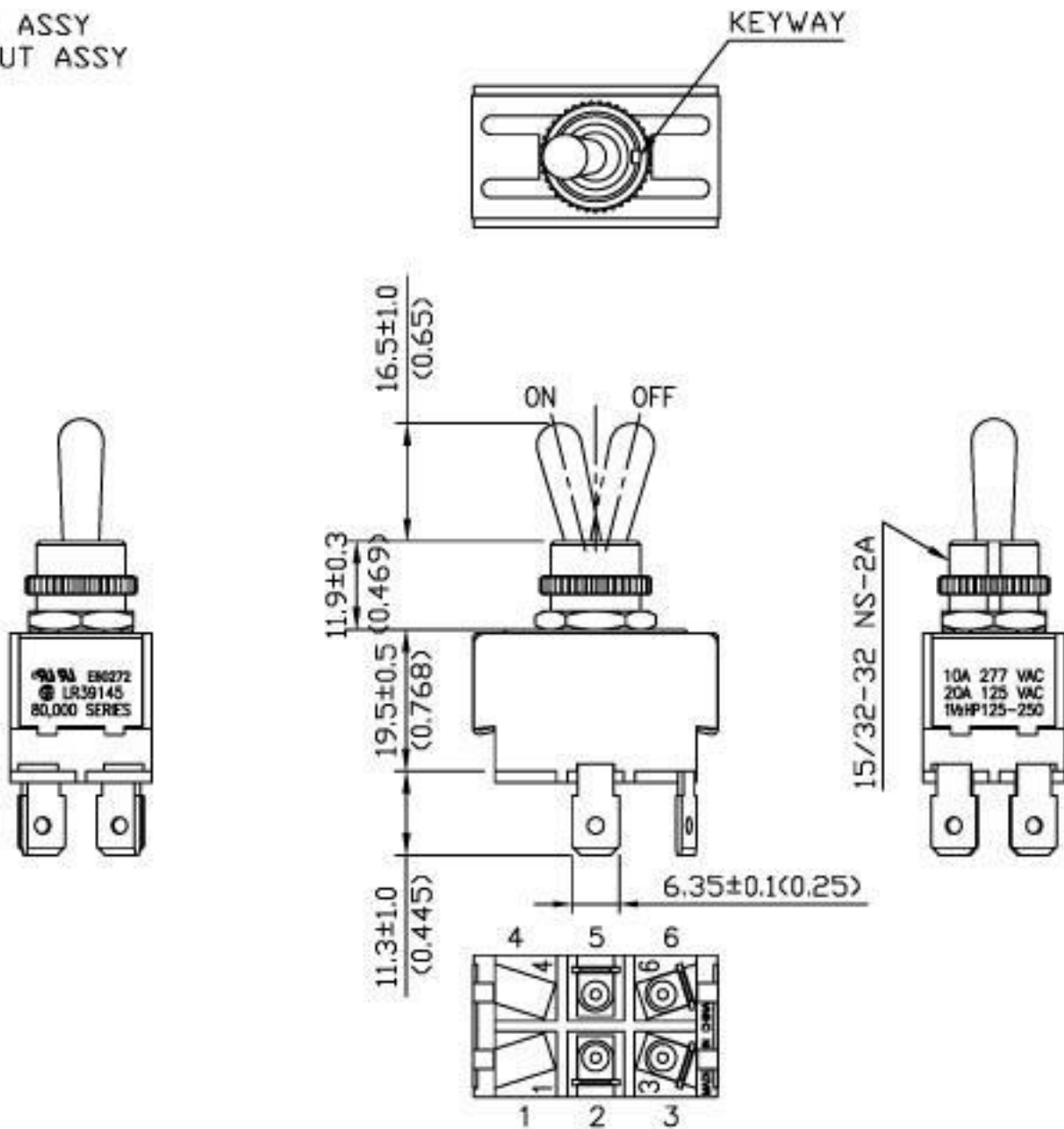


Rating	10A 277VAC, 20A 125VAC 1½HP 125-250VAC	Mount Hole		Circuit Structure	
Contact R	50m ohm Max.				
Insulation R	DC 500V 100M ohm Min.				
Dielectric Strength	AC 1500V 1 minute				
Circuit	4P DPST ON-OFF				
Operation Force	1200g±300g				

HEX NUT ASSY
KNURL NUT ASSY



Unit	mm (inch)	SPEMCO	1188-Q/20	REV.	1
------	--------------	--------	-----------	------	---